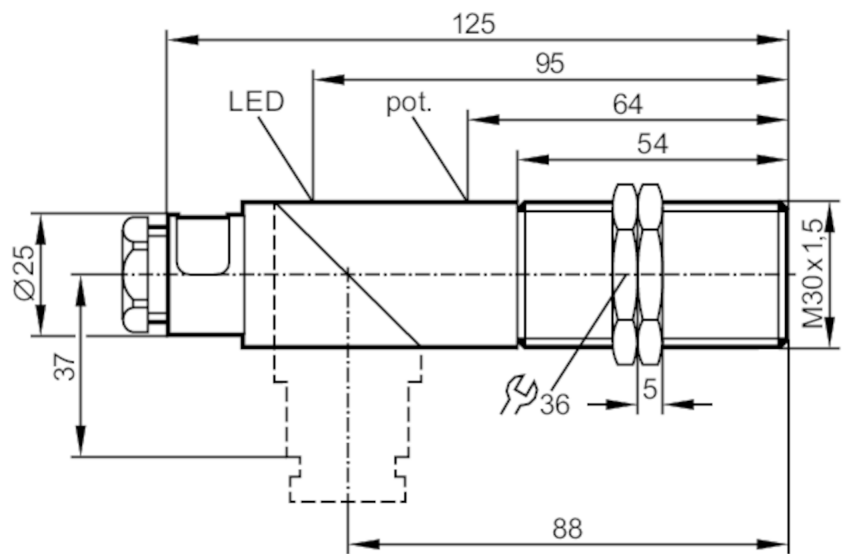




Capacitive sensor

KIE3015-FPKG/NI/55V



Product characteristics		
Electrical design		PNP
Output function		normally open / closed; (selectable)
Sensing range	[mm]	15
Housing		Threaded type
Dimensions	[mm]	M30 x 1.5 / L = 125
Electrical data		
Operating voltage	[V]	10...55 DC; (cULus - Class 2 source required)
Current consumption	[mA]	14; (24 V)
Protection class		II
Reverse polarity protection		yes
Outputs		
Electrical design		PNP
Output function		normally open / closed; (selectable)
Max. voltage drop switching output DC	[V]	2.5
Permanent current rating of switching output DC	[mA]	250
Switching frequency DC	[Hz]	40
Short-circuit proof		yes
Overload protection		yes
Monitoring range		
Sensing range	[mm]	15
Real sensing range Sr	[mm]	15 ± 10 %
Operating distance	[mm]	0...12.1



Capacitive sensor

KIE3015-FPKG/NI/55V

Accuracy / deviations			
Correction factor		glass: 0.4 / water: 1 / ceramics: 0.2 / PVC: 0.2	
Hysteresis	[% of Sr]		1...15
Switch-point drift	[% of Sr]		-15...15
Operating conditions			
Ambient temperature		[°C]	-25...70
Protection			IP 65
Increased immunity			yes; (Increased immunity to conducted radio frequency interference)
Tests / approvals			
EMC		EN 60947-5-2	
MTTF		[years]	743
Mechanical data			
Weight		[g]	135
Housing			Threaded type
Mounting			non-flush mountable
Dimensions		[mm]	M30 x 1.5 / L = 125
Thread designation			M30 x 1.5
Material			PBT; bevelled housing part: PC
Displays / operating elements			
Display		Switching status	1 x LED, yellow
Accessories			
Items supplied			lock nuts: 2
Remarks			
Pack quantity			1 pcs.
Electrical connection			
terminals: ...2.5 mm²; Cable sheath: Ø 7...13 mm; Cable gland: M20 X 1.5			
Connection			

